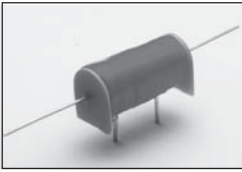


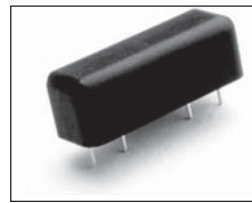
# Additional Product Offerings



**1200**

*For More Information,  
Contact [sales@cotorelay.com](mailto:sales@cotorelay.com)*

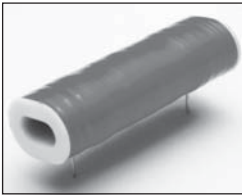
- ◆ Insulation Resistance to  $10^{14} \Omega$ .
- ◆ High Voltage Load Switching Available.
- ◆ Versatile, Multi-Pole Contact Forms (Form A, B & C).
- ◆ Magnetic, Electrostatic, & Coaxial Shield Available.
- ◆ Custom Designs Available.



**8100**

*For More Information,  
Contact [sales@cotorelay.com](mailto:sales@cotorelay.com)*

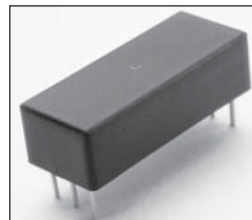
- ◆ PCB SIP Mounting - 0.2" x 0.4" x 0.2" Pin Spacing.
- ◆ High Voltage Isolation (Contact-to-Coil) for Telecom Switching.
- ◆ High Speed Switching Compared to Electromechanical Relays.
- ◆ Hermetically Sealed Contacts for Long Life & High Reliability.
- ◆ Internal Magnetic Shield Optional.
- ◆ UL Recognized.



**1300**

*For More Information,  
Contact [sales@cotorelay.com](mailto:sales@cotorelay.com)*

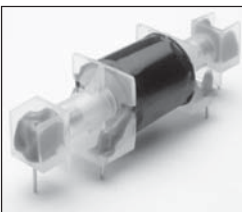
- ◆ Build Your Own Relay with 1300 Series Coils.
- ◆ Multiple Bobbin Sizes Accommodate from 1 to 6 Reed Switches.
- ◆ 5V to 48 Volt DC Designs
- ◆ Custom Designs Available.



**8300**

*For More Information,  
Contact [sales@cotorelay.com](mailto:sales@cotorelay.com)*

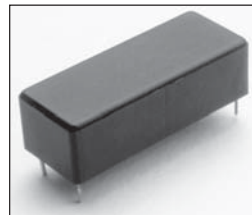
- ◆ Versatile Switching Capabilities.
- ◆ Multi-Pole Form A Contacts.
- ◆ PCB Mounting - 0.7" x 0.100" Grid.
- ◆ Hermetically Sealed Contacts for Long Life and High Reliability.
- ◆ Potted in Metal Shell Which Provides Magnetic Shield.



**5800**

*For More Information,  
Contact [sales@cotorelay.com](mailto:sales@cotorelay.com)*

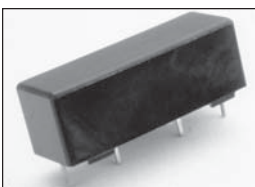
- ◆ Power RF Relay.
- ◆ Switching Capability up to 6 Amps at 30 Mhz.
- ◆ High Voltage: Standoff Capability Up to 15000 Volts.
- ◆ High Power: Switching Capability up to 200 Watts.
- ◆ Custom Designs Available



**8600**

*For More Information,  
Contact [sales@cotorelay.com](mailto:sales@cotorelay.com)*

- ◆ Versatile Multi-Pole Contact Forms (Form A, B and C).
- ◆ PCB Mounting - 1.0" x 0.150" Grid.
- ◆ Hermetically Sealed Contacts for Long Life and High Reliability.
- ◆ Potted in Thermoplastic Polyester Shell - Impervious to Conventional Board Cleaning Procedures.
- ◆ Internal Magnetic Shield Offered on All Models.



**8200**

*For More Information,  
Contact [sales@cotorelay.com](mailto:sales@cotorelay.com)*

- ◆ Automated "Design for Manufacturing" Provides High Quality at Low Cost.
- ◆ Versatile PCB Mounting - 0.2" x 0.4" x 0.2" or 0.3" x 0.4" x 0.3" SIP Pin Spacing.
- ◆ High Dielectric Strength, Contact-to-Contact, & Contact-to-Coil.
- ◆ High Voltage Switching and Load Switching Packages Available.
- ◆ High Speed Switching Compared to Electromechanical Relays.
- ◆ Hermetically Sealed Contacts for Long Life and High Reliability.
- ◆ Potted in Thermoplastic Polyester Shell - Impervious to Conventional Board Cleaning Procedures.
- ◆ Internal Magnetic Shield Optional.



**8700**

*For More Information,  
Contact [sales@cotorelay.com](mailto:sales@cotorelay.com)*

- ◆ High Switch (1.5 A) and Carry (6.0 A) Current Ratings.
- ◆ Versatile Multi-Pole Contact Forms (Form A, B and C).
- ◆ PCB Mounting Versatility - 2.5" x 0.218" Grid.
- ◆ Hermetically Sealed Contacts for Long Life and High Reliability.
- ◆ Internal Magnetic Shield Offered on All Models.